



IPB University
— Bogor Indonesia —

Department of
Agribusiness
Faculty of Economic and Management

ACADEMIC PROGRAM BOOK

Agribusiness Undergraduate Program



@ico_ipb



global.ipb.ac.id



Bogor, Indonesia

LEARNING OUTCOME

1

Able to think critically in order to solve tropical agribusiness

2

Able to identify and analyze domestic and global tropical agribusiness environment

3

Able to communicate and present business idea effectively and convincingly in the form of writing and orally

4

Able to construct business plan in tropical agribusiness

5

Able to identify agribusiness system from various point of view

6

Able to understand and ethical perspective on tropical agribusiness environment

7

Having the ability in data, technological and human literacy

8

Having the creativity, entrepreneurship and leadership in tropical agribusiness

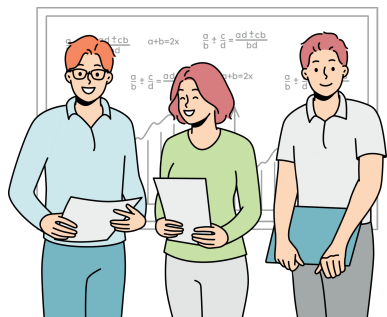
9

Able to work and produce individually and team



PROFILE

SNAPSHOTS



639
students

22

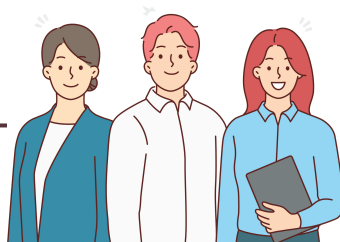
of lectures
have **doctoral**
degree

7

of lectures
have **master's**
degree

6

of lectures are
professors



ACCREDITATION



Accredited by BAN-PT

PROFILE

A Brief History

The existence of the Department of Agribusiness, Faculty of Economics and Management of IPB University is stated in the decree of IPB Rector number 001/K13/PP/2005. The scientific mandate of the Department of Agribusiness is based on a full awareness of the importance of agribusiness education in Indonesia (and also in the world), namely agribusiness education that is multidisciplinary in nature by combining social, economic, and management sciences, supported by system theory and applied technology and biological resource materials (agriculture, fisheries, animal husbandry and forestry) that characterize the competence of its graduates.

Currently, the Agribusiness Undergraduate Program has two divisions (scientific group sections), namely; (1) Agribusiness Policy Division and (2) Business and Entrepreneurship Division. In the future, the development of the division is directed at the scientific development of Agribusiness Economics, Agribusiness Companies, and Agribusiness Entrepreneurship. In addition to the undergraduate program, the Department of Agribusiness runs two postgraduate programs, namely Master of Science in Agribusiness (MSA) and Doctor of Science in Agribusiness (DSA).

The Department of Agribusiness has designed an international program in the form of international classes in undergraduate study programs. And it has collaborated with overseas campuses in the form of Joint Degree and Double Degree in Postgraduate study programs, namely with Gottingen University (since 2017) and Queensland University (being explored in 2023).

The student capacity for S1 is 205 for 2024 people with a competitive input ratio. Agribusiness Undergraduate Study Program is one of the study programs that fall into the top 5 most interested categories at IPB. To maintain academic quality, the Department is accredited by BAN PT (National Accreditation Board for Higher Education), AUN (ASEAN University Network) and ISO 9001: 2015. Currently, the Bachelor of Agribusiness Study Program is implementing the K2020 curriculum integrated with MBKM to prepare graduates who are adaptive, agile, and empowered.



PROFILE

Mandate and Advantages of IPB Agribusiness Department

Mandate

Development of knowledge and business insights in agriculture, fisheries, animal husbandry and forestry through a system, business and entrepreneurship approach.

Advantages

- IPB agribusiness undergraduate education has a quality curriculum and becomes a reference (trendsetter) for other campuses in agribusiness undergraduate programs in Indonesia.
- The curriculum is based on KKNi and user needs (industry/work field); is adaptive to development and agile; with very short waiting time for graduates to work, on average < 3 months (even 0 months / before graduating has been accepted to work).
- In addition to being built on the foundation of economics and management, the distinctive curriculum is strengthened by entrepreneurship; moreover, students can take technical courses in other faculties (agriculture, animal husbandry, fisheries and others) to improve their qualifications and understanding of the main science (agribusiness); furthermore, many students have started businesses while still studying.
- Accreditation A by BAN-PT and AUN-QA Certification (ASEAN level).
- Fastrack Program (S1 and S2 Synergy) that enables students to graduate S1 and S2 in 5 years.
- Lecturers who graduated from domestic and foreign countries who have competence in agribusiness education.
- Graduates are well-positioned to work in various sectors/jobs, because the agribusiness system is a mega sector in the economy.
- It is one of the favorite study programs/departments (TOP 10) and the most sought after by prospective students at IPB.



PROFILE

Profile and Competence of IPB Agribusiness Graduates

The profiles of agribusiness graduates are; (1) Agribusiness Entrepreneurs, (2) Professional managers in agribusiness companies, government agencies, and financial institutions, and (3) consultants and agribusiness business assistants. While the competencies that will be possessed by agribusiness graduates include ;

- Mastering the theories and concepts of systems, business, and entrepreneurship for strategic and operational decision making, as well as problem solving in the field of sustainable tropical agribusiness.
- Being able to make strategic and operational decisions using quantitative and qualitative methods, and recommend alternative solutions individually and in groups in the field of sustainable tropical agribusiness
- Being able to apply and utilize the knowledge and insights of sustainable tropical agribusiness systems, businesses, and entrepreneurship in the development and resolution of Indonesian agribusiness problems that are adaptive to environmental changes.
- Having responsibility and superior character in applying knowledge and insights in the field of sustainable tropical agribusiness in the community.

Profile Link :

- Video: <https://ipb.link/profile-agb>
- Photo representative of Agribusiness Study Program: <https://ipb.link/photo-depagribisnisifemipb>



CURRICULUM

Program Structure

Program Scheme

**Single Degree
(3.5 + 0.5)**

3.5 years at IPB University
0.5 year at partner University



CURRICULUM

Course Mapping

Common Core Courses & Fundamental Courses

Courses	Credit	Semester
Islam	3(2-1)	2
Christianity	3(2-1)	1
Catholic Religion	3(2-1)	1
Hindu Religion	3(2-1)	1
Buddhism	3(2-1)	1
Confucian Religion	3(2-1)	1
Pancasila Education	1(1-0)	2
Civic Education	1(1-0)	2
Indonesian	2(1-1)	2
English*	2(1-1)	1
Biology	2(2-0)	2
Physics	2(2-0)	1
Chemistry	2(2-0)	1
Economics	3(2-1)	1
Innovative Agriculture	2(2-0)	1
Mathematics and Logical Thinking	3(2-1)	1
Statistics and Data Analysis	3(3-0)	1
Computational Thinking	2(2-0)	2
Sociology	2(2-0)	2
Sports*	1(0-1)	1
Calculus	3(2-1)	2

Foundational Literacies & Academic Core Courses

Courses	Credit	Semester
Macroeconomics	3(2-1)	3
Tropical Bio-Business	2(2-0)	3
Agribusiness Accounting	3(2-1)	3
Agribusiness Entrepreneurship	3(2-1)	3
Agribusiness Leadership	2(2-0)	3
Managerial Economics	3(2-1)	3
Agribusiness System and Management	2(2-0)	3
Agribusiness Quantitative Method	3(2-1)	4
Agribusiness Forecasting	3(2-1)	4
Agribusiness Information System	2(2-0)	4
Agribusiness Consumer Behavior	3(2-1)	4
Agribusiness Risk	2(2-0)	4
Agribusiness Negotiation	2(2-0)	4
Agribusiness Law and Ethics	2(2-0)	4
Agribusiness Operation Research	3(2-1)	4

CURRICULUM

Course Mapping

In-depth Study Program Courses

Courses	Credit	Semester
Farm Management	3(2-1)	5
International Business	2(2-0)	5
Agribusiness Feasibility Study	3(2-1)	5
Agribusiness Cooperatove and Institution	3(2-1)	5
Agribusiness Development and Politics	2(2-0)	5
Agribusiness Marketing	2(2-0)	5
Agribusiness Research Methodology	3(2-1)	6
Agribusiness Finance	3(2-1)	6
Agribusiness Value Chain	2(2-0)	6
Agribusiness Strategy and Policy	3(2-1)	6
Agribusiness Planning	3(2-1)	6

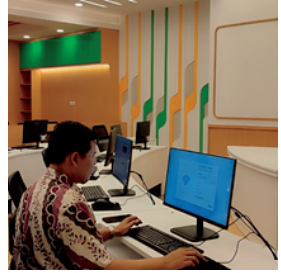
Final Year Project, Capstones, KKNT, Internship

Courses	Credit	Semester
International Learning Experience		7
Agribusiness Entrepreneurial Experience	11(0-11)	7
Agribusiness Managerial Experience	11(0-11)	7
Agribusiness Development Policy Experience	11(0-11)	7
Community Development	4(0-4)	7
Seminar	1(0-1)	7,8
Final Project	6(0-6)	7,8

Enrichment Courses

Courses	Credit	Semester
Courses from other programs in IPB		
Courses from other programs outside IPB		
Credit Earning (Foreign)		
Internship (Domestic/Foreign)		
Exchange/International Exposure	21	3, 4, 5,
Competition		6, 7, 8
Entrepreneur Schemes		
Independent Project/ Village Program/ Research		

ACTIVITIES



INTERNATIONAL COLLABORATION

List of International Collaboration

Country/Region		Affiliated Partners
Universities	Malaysia	Universiti Putra Malaysia International Islamic University Malaysia Universiti Kebangsaan Malaysia



الجامعة الإسلامية العالمية ماليزيا
INTERNATIONAL ISLAMIC UNIVERSITY MALAYSIA
يونس بن يحيى الشلالا أئمة الأئمة بلدينا



UNIVERSITI
KEBANGSAAN
MALAYSIA
National University of Malaysia



CONTACT

The Faculty Campus

The campus of the Department Agribusiness an Campus is located in Bogor City. The closest train station is Bogor Station. With easy access to neighboring cities, the campus is just 60 minutes from Jakarta on Commuter Line, making it convenient for students to commute from out of town. The rich natural surroundings provide students with an ideal environment to study.

Jl. Kamper, Wing 4 Level 5
Campus of IPB Darmaga
Bogor 16680, West Java -
Indonesia



+62 2518629654



dep-agribisnis@apps.ipb.ac.id
dpi_ipb@apps.ipb.ac.id



agribisnis.ipb.ac.id

