



# ACADEMIC PROGRAM BOOK

School of Veterinary Medicines and Biomedical Sciences

**“TO HARMONIZE ANIMAL, HUMAN,  
AND ENVIRONMENTAL HEALTH”**



# LEARNING OUTCOME

1

Able to explain and apply biomedical science and technology and categorize healthy and sick animals, based on anatomical-physiological features, clinical symptoms, pathological changes, and laboratory diagnostic techniques appropriately.

2

Able to explain the control, eradication, and treatment of diseases and zoonoses, promote animal health and welfare, and ensure the safety and quality of animal products appropriately.

3

Master the concepts of animal structure, animal health, laboratory diagnostics, zoonotic diseases to work as researchers, educators, quality assurance specialists, quality controllers, entrepreneurs, or bureaucrats/government officials.

4

Have a spirit of leadership, entrepreneurial ability, effective communication skills, persistence, and a sense of responsibility to work independently and in groups, as well as show respect towards clients and work teams, and demonstrate high level of spirituality and commitment.



# PROFILE

## SNAPSHOTS



Total Alumni  
(Doctor of Veterinary Medicine)\*

7,213

104

72.8%

of lecturers  
have doctoral  
degree

20.3%

of lecturers  
are professors



Total Supporting Staff:

128

## ACCREDITATION

Owning a **Veterinary Teaching Hospital (RSHP)**, **Integrated Laboratory** accredited by ISO 17025, and **Diagnostics Service Unit**.



TERAKREDITASUNGGU

**Excellent Accreditation** by the Indonesian Accreditation Agency for Higher Education in Health (IAAHEH/LAMPTKES)

**Associate Member** of the European Association of Establishment for Veterinary Education (EAEVE)



EAEVE Merged Membership

# PROFILE

## A Brief History

SVMBS IPB University is the first faculty of veterinary medicine and a trendsetter in veterinary education in Indonesia. Veterinary education in Indonesia began in 1860 in Surabaya but was discontinued in 1875. Because of the outbreaks of Rinderpest in Indonesia, in 1906, veterinary medical education was re-established and named *Cursus tot Opleiding voorIndische Veearts* in Surabaya, later relocating to Bogor and becoming the Animal Disease Research Institute (LPPHH, now Veterinary Research Institute). In 1928, the Nederlands Indische Veeartsen School (NIVS, School of Veterinary Medicine Dutch East Indies) was also established in Bogor. In 1942, NIVS was renamed Bogor Jyul Gakko, and after the independence of the Republic of Indonesia, it became the Veterinary School (Sekolah Dokter Hewan, SDH). SDH was upgraded in 1946 to the College of Veterinary Medicine (Perguruan Tinggi Kedokteran Hewan, PTKH), which was temporarily closed thereafter.

In 1948, PTKH was reopened and became the *Faculteit voor Diergeneeskunde*, which was a part of *Universiteit van Indonesie*. In 1950, the name was changed to the Faculty of Veterinary Medicine, University of Indonesia (Fakultas Kedokteran Hewan Universitas Indonesia, FKH UI). In 1960, FKH UI changed its name to the Faculty of Veterinary Medicine and Animal Husbandry (Fakultas Kedokteran Hewan dan Peternakan, FKHP UI). Then, in 1962, it reverted to the Faculty of Veterinary Medicine, University of Indonesia, while the Animal Husbandry became the Faculty of Animal Husbandry and Seawater Fisheries (Fakultas Peternakan dan Perikanan Laut, FPPL UI).

On September 1, 1963, based on the Ministry Decree of Higher Education and Science (Menteri Pendidikan Tinggi dan Ilmu Pengetahuan, PTIP) Number 91/1963, and subsequently endorsed by the Presidential Decree Number 279/1965, IPB University was formally established with five faculties, namely: the Faculty of Agriculture (derived from the Department of Agriculture, Faculty of Agriculture UI), the Faculty Forestry (derived from the Department of Forestry, Faculty of Agriculture UI), the Faculty of Animal Husbandry (derived from the Faculty of Animal Husbandry and Seawater Fisheries, UI), and the Faculty of Fisheries (formed jointly from the Department of Freshwater Fisheries, Faculty of Agriculture and the Department of Seawater Fisheries, Faculty of Veterinary Medicine and Animal Husbandry, UI).

# PROFILE

## A Brief History

A review of history shows that the Faculty of Agriculture and the Faculty of Veterinary Medicine are two faculties which further developed the Faculty of Fisheries and Marine Sciences, the Faculty of Animal Science, and the Faculty of Forestry. From these five faculties at IPB University, other faculties were later developed. Based on the rector's decree, in December 2021, Faculty of Veterinary Medicine was renamed as the School of Veterinary Medicine and Biomedical Sciences.

“SVMBS IPB University is the first Faculty of Veterinary Medicine and a trendsetter of veterinary education in Indonesia.”

Since its establishment until the year of 2000, SVMBS IPB University occupied the main campus in Taman Kencana, Bogor, as well as two other campuses in Pajajaran and Cilibende. In 2001, SVMBS IPB University occupied a new building in Dramaga Campus and veterinary clinic units in Taman Kencana as a satellite facility of the Animal Hospital.



# CURRICULUM

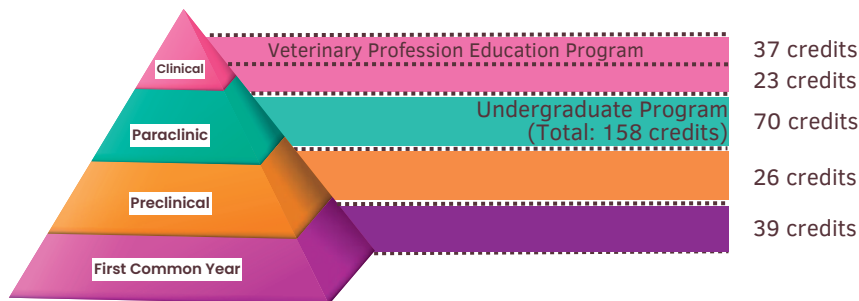
## Undergraduate and Veterinary Profession Education Program

The program is SVMBS IPB University is divided into two programs, i.e. Undergraduate Program (8 semester, 158 credits) with the degree Bachelor of Veterinary Science' (Sarjana Kedokteran Hewan) and Veterinary Profession Education Program (18 months, 37 credits) with the degree 'Doctor of Veterinary Medicine' (Dokter Hewan).

The program is implemented through the curriculum: preclinical, paraclinical, and clinical subjects. Through this method, the students will be aware that the science and technology in veterinary medicine is always developed.

The curriculum is delivered in two methods, i.e. tutorial class and student-centered learning. Most of the subjects in the undergraduate program are delivered in tutorial class. However, the practical works, field works, and clinical subjects are delivered using student-centered learning method. In addition, all subjects in the veterinary profession education program are delivered using student-centered learning, to stimulate them to be long-life learners.

“The program is implemented through the curriculum: preclinical, paraclinical, and clinical subjects.”



# CURRICULUM

## Course Mapping

### First Common Year

Courses	Credit	Semester
Religion	3(2-1)	1
Bahasa Indonesia	2(1-1)	1
English	2(1-1)	1
Sport	1(0-1)	1
Innovative Agriculture	2(2-0)	1
Statistic and Data Science	3(3-0)	1
Physics, Science, and Technology	3(2-1)	1
Veterinary Profession and Animal Welfare	2(1-1)	1
Pancasila	1(1-0)	2
Civics	1(1-0)	2
Economy	2(2-0)	2
Mathematics and Logical Thinking	3(2-1)	2
Sociology	2(2-0)	2

### Precilical

Courses	Credit	Semester
Basic Biology	3(2-1)	1
Chemistry, Science, and Technology	3(2-1)	2
Statistical Methodology	3(2-1)	3
Veterinary Anatomy I	3(2-1)	2
General Biochemistry	3(2-1)	3
Veterinary Anatomy II	3(2-1)	3
Veterinary Histology I	2(1-1)	3
Veterinary Histology II	2(1-1)	4
Embryology and Development Genetics	3(2-1)	3
Veterinary Physiology I	3(2-1)	3
Veterinary Physiology II	3(2-1)	3
Scientific Methodology	2(1-1)	3

# CURRICULUM

## Course Mapping

### Paraclinical

Courses	Credit	Semester
Topographic and Region Anatomy	3(2-1)	4
Reproductive Science and Technology	3(2-1)	5
Pharmacology I	2(2-0)	5
Veterinary Immunology	2(2-0)	5
Veterinary Parasitology: Ectoparasites	2(1-1)	4
Animal Nutrition Science	3(2-1)	4
Veterinary Parasitology: Endoparasites	3(2-1)	4
Medical Biochemistry	2(2-0)	4
Veterinary Bacteriology and Mycology	3(2-1)	3
Veterinary Virology	2(1-1)	4
General Pathology	3(2-1)	3
Systemic Pathology I	2(2-0)	6
Pharmacology II	3(2-1)	6
Obstetrics and Gynaecology	3(2-1)	6
Public Health	1(1-0)	5
Bacterial and Mycotic Diseases	3(2-1)	3
Viral Diseases	2(1-1)	6
Medical Immunology	2(2-0)	5
Hygiene of Food of Animal Origin	3(2-1)	6
Avian Pathology	2(2-0)	8
Zoonoses	2(2-0)	7
Veterinary Epiderminology and Economy	3(2-1)	7
Veterinary Toxicology	2(1-1)	7
Systemic Pathology II	3(2-1)	7
Aquatic Health Management	2(2-0)	6
Animal Behaviour (elective)		
Animal Laboratory Health Management (elective)		
Biomedical Instrumentation (elective)		
Wildlife Health Management (elective)		
Poultry Health Management (elective)		



# CURRICULUM

## Course Mapping

### Clinical

Courses	Credit	Semester
Veterinary Clinical Diagnostics	3(2-1)	5
General Surgery	3(2-1)	5
Internal Medicine I	2(2-0)	6
Radiology	2(1-1)	7
Special Surgery I	2(1-1)	6
Internal Medicine II	2(2-0)	7
Clinical Pathology	2(1-1)	6
Clinical Demonstration	1(0-1)	8
Clinical Dietetic	2(2-0)	7
Pharmaceutical preparation and General Therapy	2(1-1)	8
Special Surgery II	2(1-1)	7
Veterinary Legislation and Ethics	2(2-0)	8



# DIVISIONS

## Tenth Divisions of The SVMBS

Since 2005, SVMBS IPB University has three divisions, i.e., Division of Anatomy Physiology and Pharmacology (AFF), Division of Animal Diseases and Veterinary Public Health (IPHK), and Division of Clinic, Reproduction and Pathology (KRP).

- 1 Division of Anatomy Histology and Embryology
- 2 Division of Physiology
- 3 Division of Pharmacology and Toxicology
- 4 Division of Medical Microbiology
- 5 Division of Parasitology and Medical Entomology
- 6 Division of Veterinary Public Health and Epidemiology
- 7 Division of Internal Medicine
- 8 Division of Surgery and Radiology
- 9 Division of Reproduction and Obstetrics
- 10 Division of Pathology

# FACILITIES



**Animal Teaching Hospital of SVMBS IPB University  
(RSHP)**



**Reproductive  
Rehabilitation Unit  
(URR)**



**Horse Field**



**School of Veterinary  
Medicine and  
Biomedicine  
Education and Service  
Laboratories**



**Laboratory Animal  
Management Unit**

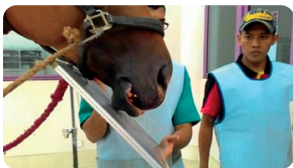


**Residential Pest  
Control Study Unit**

# INTERNATIONAL COLLABORATION

## List of International Collaboration

Country/Region		Affiliated Partners	
Universities	Germany	University of Gottingen University of Giessen University of Munich University of Hannover	
	United Kingdoms	University of Edinburgh	
	Netherlands	Utrecht University	
	Japan	University of Miyazaki Tokyo University Yamaguchi University Obihiro University Nagoya University Hokkaido University	
	Australia	Queensland University Sydney University	
	Malaysia	Universiti Putra Malaysia	
	Timor Lester	Universidade Nacional Timor Lorosa'e	
	Global Institutions		FAO, WHO, OIE, IDP, USAID, EU, JICA



# CONTACT

## The Faculty Campus

The campus of the School of Veterinary Medicine and Biomedical Sciences is located in Bogor City. The closest train station in Bogor Station. With easy access to neighboring cities, the campus is just 60 minutes from Jakarta on Commuter Line, making it convenient for students to commute from out of town. The rich natural surroundings provide students with an ideal environment to study.

Jl. Agatis, Kampus IPB  
Dramaga, Bogor, West Java  
16680



+62-2518629459  
+62-2518629469  
+62-2518629470



skhb@apps.ipb.ac.id  
dpi\_ipb@apps.ipb.ac.id



skhb.ipb.ac.id

