



IPB University  
— Bogor Indonesia —

Department of  
Forest Management

# ACADEMIC PROGRAM BOOK

# FOREST MANAGEMENT

## Undergraduate Program



@ied\_ipb



global.ipb.ac.id



Bogor, Indonesia

# LEARNING OUTCOME

1

Master concepts and theories of forest management using applied forestry science and technology.

2

Analyze forest management and forestry issues through an integrative ecological, quantitative, socio-economic, political, and conservation approach.

3

Formulate quantitative and qualitative solutions using biophysical science, data science, artificial intelligence, and socio-cultural-economic-political factors.

4

Communicate forest-management complexities and trade-offs through oral, written, visual, in-person, and virtual methods.

5

Apply forest measurement, geomatics, silviculture, hydrology, economics, utilization, and policy techniques to develop and evaluate forest resources.

6

Select effective models and techniques for forest management and financial planning at the landscape scale.

7

Take responsibility for individual, team, and organizational work.

8

Demonstrate discipline and conduct aligned with applicable norms and regulations.

9

Act innovatively and creatively in adapting to the Fourth Industrial Revolution.

# PROFILE

## SNAPSHOTS



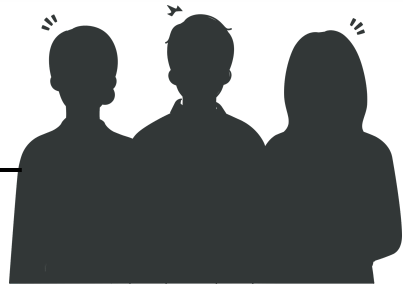
**519**  
students

**27**

**Faculty Members**  
multidisciplinary  
expertise

**12**

**Professors**  
strong  
academic  
leadership



## ACCREDITATION



Accredited by ASIIN and BAN-PT

# PROFILE

## A Future – Ready Forestry Degree

### Global Academic Pathway

Single-degree structure with international exposure through mobility, internship, credit earning, joint class, summer course, or other recognized academic collaboration.

### Forest Management Plus Technology

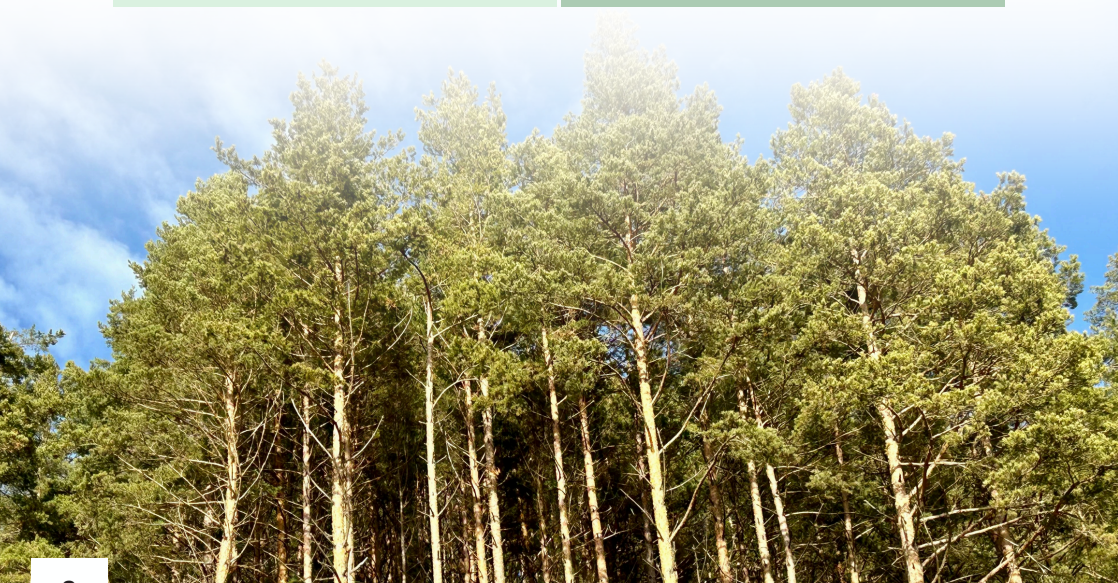
Students learn forest inventory, biometrics, remote sensing, GIS, data analysis, hydrology, economics, policy, and responsible forest operations.

### Field-to-policy Competence

The program builds capacity to connect biophysical forest knowledge with community, business, governance, and landscape-scale decision making.

### Career Versatility

Graduates can pursue professional forestry, public administration, sustainability consulting, NGOs, research, forest business, or advanced study.



# PROFILE

## Program Profile

The Bachelor of Science degree program in Forest Management (BSc.FM) has been offered since 1999/2000, after previously being one of three specialization subjects in the BSc in Forestry. Forestry education at IPB University has a long academic legacy since the establishment of IPB University in 1963. **The program holds BAN-PT Excellent Accreditation and ASIIN international accreditation, valid until 2027.**

The curriculum prepares entry-level professional foresters who can integrate natural sciences, social and economic sciences, quantitative and qualitative methods, forestry techniques, policy analysis, and ecosystem-based forest management. The program also prepares graduates for advanced education, research, public administration, development and advocacy institutions, and other forest-related professions.

**Prepare graduates who are scientific, adaptive, field-ready, data-literate, and globally connected.**

# CURRICULUM

## Program Structure

### Program Scheme

**3.5**

**Years at IPB**

Core curriculum  
+ field practice

**0.5**

**Years exposure**

Partner university  
/ international  
component

**8**

**Semesters**

Capstone,  
internship,  
thesis

**1**

**Single Degree**

IPB University  
pathway

### International Component

Implemented through mobility, internship, credit earning, joint class, summer course, or other recognized academic collaboration.

### Experiential Learning

Students engage with field practice, thematic field work, internship, capstone project, seminar, and undergraduate thesis.

### Industry and Community Relevance

Courses connect forests with watersheds, communities, private forest management, forest business, utilization, valuation, and policy.

### Research-ready Profile

Students build strong foundations in scientific writing, data analysis, forest biometrics, remote sensing, and integrated forest management.

# CURRICULUM

## Curriculum of Chemistry Undergraduate

### Semester 1

Course	Credit
Religion Education	3(2-1)
Pancasila Education	2(1-1)
Indonesian Language	2(1-1)
General Biology	2(2-0)
Innovative Agriculture	2(2-0)
Basic Economy	3(2-1)
Mathematics and Logical Thinking	3(2-1)

### Semester 2

Course	Credit
English	2(1-1)
Citizen Education	2(1-1)
General Physics	2(2-0)
General Chemistry	2(2-0)
Statistics and Data Analysis	3(3-0)
Computational Thinking	2(2-0)
Sociology	2(2-0)
Forest Science and Environmental Ethics	2(2-0)

# CURRICULUM

## Course Mapping

### Semester 3

Course	Credit
Forest Ecology	3(2-1)
Silviculture	3(2-1)
Forest Harvesting	3(2-1)
Forest Resources Inventory	3(2-1)
Applied GIS in Forestry	3(2-1)
Community Forestry	3(2-1)
Forest Protection	2(2-0)
Forestry Field Practices (PLK)	3(0-3)

### Semester 4

Course	Credit
Dendrology	3(2-1)
Forest Data Analysis	3(2-1)
Forestry Extension	2(1-1)
Forestry and Environmental Policy and Legislation	2(2-0)
Forest Economics	3(3-0)
Forest Soil Science	2(2-0)
Basic Properties of Forest Products	2(2-0)
EC1	3
EC2	3

### Semester 5

Course	Credit
Forest Biometrics	3(2-1)
Forest Hydrology	3(2-1)
Remote Sensing for Forest Resource Management	3(2-1)
Forestry Business and Investment	2(2-0)
Private Forest Management	2(2-0)
Forest Access Development	2(1-1)
Forest Utilization Operation	3(2-1)
EC3	3
EC4	2

# CURRICULUM

## Course Mapping

### Semester 6

Course	Credit
Research Methodology and Scientific Writing	2(2-0)
Integrated Forest Management	3(2-1)
Forest Management Planning	3(2-1)
Forest and Environmental Valuation	2(1-1)
Forestry and Environmental Policy Analysis	2(2-0)
Forest Harvesting Cost Analysis	2(1-1)
Thematic Field Work	4(0-4)
EC5	3

### Semester 7

Course	Credit
Capstone: Forest Resources Management	6(0-6)
Colloquium	1(0-1)
Field Work Practice / Internship (PKL)	4(0-4)

### Semester 8

Course	Credit
Seminar	1(0-1)
Undergraduate Thesis	6(0-6)

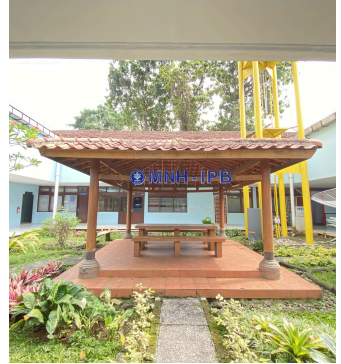
# FACILITIES



**Student Sports Area**



**Drinking Water Facility**



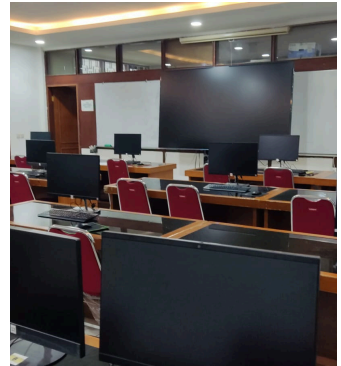
**Student Discussion Area**



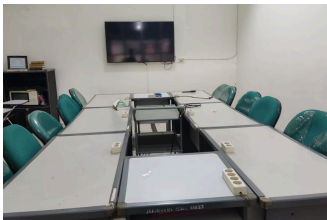
**Remote Sensing and Aerial Survey Laboratory**



**Matoa Academic Meeting Room**



**GIS and Remote Sensing Laboratory**



**Forest Policy Academic Meeting Room**



**Foresta Academic Meeting Room**

# ACTIVITIES



**Field Practice of Drone Use**



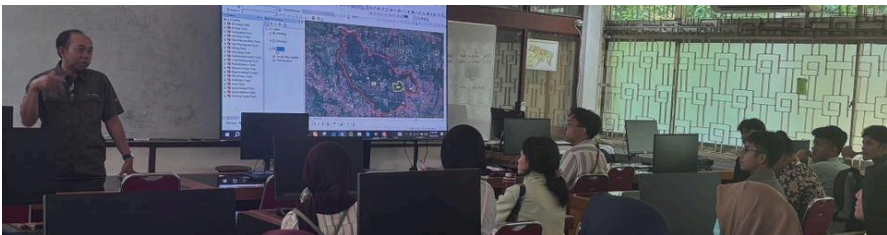
**Remote Sensing and GIS Laboratory**



**Field Practice and Safety Briefing**



**Physical Chemistry Laboratory**



**Remote Sensing and GIS Laboratory Session**

# FACILITIES & ACTIVITIES

## Lecture and Seminar Rooms

Formal classes, guest lectures, academic presentations, and student discussions.

## Remote Sensing and GIS Laboratory

Spatial analysis, mapping, landscape interpretation, and technology-enhanced forest management.

## Forest Resource Utilization Practice

Hands-on exposure to forest operations, utilization, and responsible resource management.

## Arboretum and Outdoor Learning Spaces

A living learning environment for field observation, ecological understanding, and campus-based practical learning.



# INTERNATIONAL COLLABORATION

## List of International Collaboration

	Country/Region	Affiliated Partners
Universities	Malaysia Malaysia Turkey Poland  Germany Japan	Universiti Putra Malaysia (UPM) Universiti Teknologi MARA (UiTM) Istanbul University-Cerrahpasa Warsaw University of Life Sciences / SGGW  University of Goettingen The University of Tokyo

### IUFRO RG 3.07.00

International research network exposure and scholarly collaboration in forest operations and engineering.

### Fairventures Worldwide Indonesia

Partnership exposure involving research, student publications, internship opportunities, agroforestry, carbon stock studies, and community development.

### FORCLIME FC

Practitioner-based learning and guest lecture exposure on forestry investment, sustainable forest management, emission reduction, and community welfare.

# CONTACT

## | The Faculty Campus

The Department of Forest Management, IPB University, is located in Dramaga District, Bogor Regency. It is approximately a 50-minute drive from Bogor City and is accessible by various modes of public transportation (online taxis, buses, and minibuses). The rich natural surroundings provide students with an ideal environment to study.

### Faculty of Forestry and Environment

Jl. Ulin Lingkar Akademik, Kampus IPB Darmaga, Bogor 16680, Jawa Barat.



+62 812-1169-0609  
+62 815-4808-2950



dpi\_ipb@apps.ipb.ac.id  
manhut@apps.ipb.ac.id



global.ipb.ac.id

